















S.1  
 - da - mur, ca - ve - a - mus.

S.2  
 da - mur, ca - ve - a - mus.

A.1  
 da - mur, ca - ve a - mus.

A.2  
 da - mur, ca - ve - a - mus.

T.1  
*mf*  
 - vi - mur, ca - ve - a - mus.

T.2  
*mf*  
 di - vi - da - mur, ca - ve - a - mus.

Bar.  
*mf* *mf*  
 di - vi - da - mur, ca - ve - a - mus.

B.  
*mf* *mf*  
 di - vi - da - mur, ca - ve - a - mus.





29

S.1 *pp*  
Et in me - di - o

S.2 *pp*  
Et in me - di - o

A.1 *subito p* *pp*  
Ces-sent iur-gia ma - lig - na, ces-sent - tes. Et in me - di - o

A.2 *subito p* *pp*  
Ces-sent iur-gia ma - lig - na, ces-sent li - tes. Et in me - di - o

T.1 *subito p* *pp*  
Ces-sent iur-gia ma - lig - na, ces-sent li - tes. Et in me - di - o

T.2 *subito p* *pp*  
Ces-sent iur-gia ma - lig - na, ces-sent li - tes. Et in me - di - o

Bar. *pp*  
Et in me - di - o

B. *pp*  
Et in me - di - o



*p*

S.1  
nos-tri sit Chris-tus De - us. U-bi ca-ri-tas et a -

*p*

S.2  
nos-tri sit Chris-tus De - us. U-bi ca-ri-tas et a -

*p*

A.1  
nos-tri sit Chris-tus De - us. U-bi ca-ri-tas et a -

A.2  
nos-tri sit Chris-tus De - us. U-bi ca-ri-tas et a -

*p*

T.1  
nos-tri sit Chris-tus De - us. U-bi ca-ri-tas et a -

*p*

T.2  
nos-tri sit Chris-tus De - us. U-bi ca-ri-tas et a -

*p*

Bar.  
nos-tri sit Chris-tus De - us. U-bi ca-ri-tas et a -

*p*

B.  
nos-tri sit Chris-tus De - us. U-bi ca-ri-tas et a -



37

S.1

*pp* *mp*

mor, De - us i - bi est. Si - mul quo - que cum be - a - tis

S.2

*pp* *mp*

mor, De - us i - bi est. Si - mul quo - que cum be - a - tis

A.1

*pp* *mp*

mor, De - us i - bi est. Si - mul quo - que cum be - a - tis vi -

A.2

*pp* *mp*

mor, De - us i - bi est. Si - mul quo - que cum be - a - tis vi -

T.1

*pp* *mp*

mor, De - us i - bi est. Si - mul quo - que cum be - a - tis vi -

T.2

*pp* *mp*

mor, De - us i - bi est. Si - mul quo - que cum be - a - tis vi -

Bar.

*pp* *mp*

mor, De - us i - bi est. Si - mul quo - que cum be - a - tis

B.

*pp* *mp*

mor, De - us i - bi est. Si - mul quo - que cum be - a - tis



Più mosso

42

S.1

*p* *mf*

vi - de - a - mus, Glo - ri - an - ter vul - tum tu - um, Chris - te

S.2

*p* *mf*

vi - de - a - mus, Glo - ri - an - ter vul - tum tu - um, Chris - te

A.1

*p* *mf*

de - a - mus, Glo - ri - an - ter vul - tum tu - um, Chris - te

A.2

*p* *mf*

de - a - mus, Glo - ri - an - ter vul - tum tu - um, Chris - te

T.1

*p* *mf*

de - a - mus, Glo - ri - an - ter vul - tum tu - um, Chris - te

T.2

*p* *mf*

de - a - mus, Glo - ri - an - ter vul - tum tu - um, Chris - te

Bar.

*p* *mf*

vi - de - a - mus, vul - tum tu - um, Chris - te

B.

*p* *mf*

vi - de - a - mus, Chris - te



46

S.1

Musical staff for Soprano 1 (S.1) in G major, 4/4 time. The staff begins with a dynamic marking of *f* (forte) and a hairpin crescendo. The melody consists of quarter and eighth notes, ending with a fermata. The lyrics are: "De- us: Gau-di-um\_\_quod est im- men- sum,"

De- us: Gau-di-um\_\_quod est im- men- sum,

S.2

Musical staff for Soprano 2 (S.2) in G major, 4/4 time. The staff begins with a dynamic marking of *f* (forte) and a hairpin crescendo. The melody consists of quarter and eighth notes, ending with a fermata. The lyrics are: "De- us: Gau-di-um\_\_quod est im- men- sum,\_"

De- us: Gau-di-um\_\_quod est im- men- sum, \_

A.1

Musical staff for Alto 1 (A.1) in G major, 4/4 time. The staff begins with a dynamic marking of *f* (forte) and a hairpin crescendo. The melody consists of quarter and eighth notes, ending with a fermata. The lyrics are: "De- us: Gau-di-um\_\_quod est im- men- sum, \_ at- que pro - bum, subito *p*"

De- us: Gau-di-um\_\_quod est im- men- sum, \_ at- que pro - bum, subito *p*

A.2

Musical staff for Alto 2 (A.2) in G major, 4/4 time. The staff begins with a dynamic marking of *f* (forte) and a hairpin crescendo. The melody consists of quarter and eighth notes, ending with a fermata. The lyrics are: "De- us: Gau-di-um\_\_quod est im- men- sum, \_ at- que pro - bum, \_ subito *p*"

De- us: Gau-di-um\_\_quod est im- men- sum, \_ at- que pro - bum, \_ subito *p*

T.1

Musical staff for Tenor 1 (T.1) in G major, 4/4 time. The staff begins with a dynamic marking of *f* (forte) and a hairpin crescendo. The melody consists of quarter and eighth notes, ending with a fermata. The lyrics are: "De- us, Chris- te De- us: Gau- di- um\_\_quod est im- men- sum, \_ at- que - pro - bum, subito *p*"

De- us, Chris- te De- us: Gau- di- um\_\_quod est im- men- sum, \_ at- que - pro - bum, subito *p*

T.2

Musical staff for Tenor 2 (T.2) in G major, 4/4 time. The staff begins with a dynamic marking of *f* (forte) and a hairpin crescendo. The melody consists of quarter and eighth notes, ending with a fermata. The lyrics are: "De- us, Chris- te De- us: Gau- di- um\_\_quod est im- men- sum, \_ at- que pro - bum, subito *p*"

De- us, Chris- te De- us: Gau- di- um\_\_quod est im- men- sum, \_ at- que pro - bum, subito *p*

Bar.

Musical staff for Baritone (Bar.) in G major, 4/4 time. The staff begins with a dynamic marking of *f* (forte) and a hairpin crescendo. The melody consists of quarter and eighth notes, ending with a fermata. The lyrics are: "De- us, Chris- te De- us: Gau- di- um\_\_quod est im- men- sum, \_"

De- us, Chris- te De- us: Gau- di- um\_\_quod est im- men- sum, \_

B.

Musical staff for Bass (B.) in G major, 4/4 time. The staff begins with a dynamic marking of *f* (forte) and a hairpin crescendo. The melody consists of quarter and eighth notes, ending with a fermata. The lyrics are: "De - us: Gau- di- um\_\_quod est im- men- sum, \_"

De - us: Gau- di- um\_\_quod est im- men- sum, \_

Meno mosso

50

*pp*

S.1

Sae - cu - la per in - fi - ni - ta sae - cu - lo -

S.2

Sae - cu - la per in - fi - ni - ta sae - cu - lo -

A.1

Sae - cu - la per in - fi - ni - ta sae - cu - lo -

A.2

Sae - cu - la per in - fi - ni - ta sae - cu - lo -

T.1

Sae - cu - la per in - fi - ni - ta sae - cu - lo -

T.2

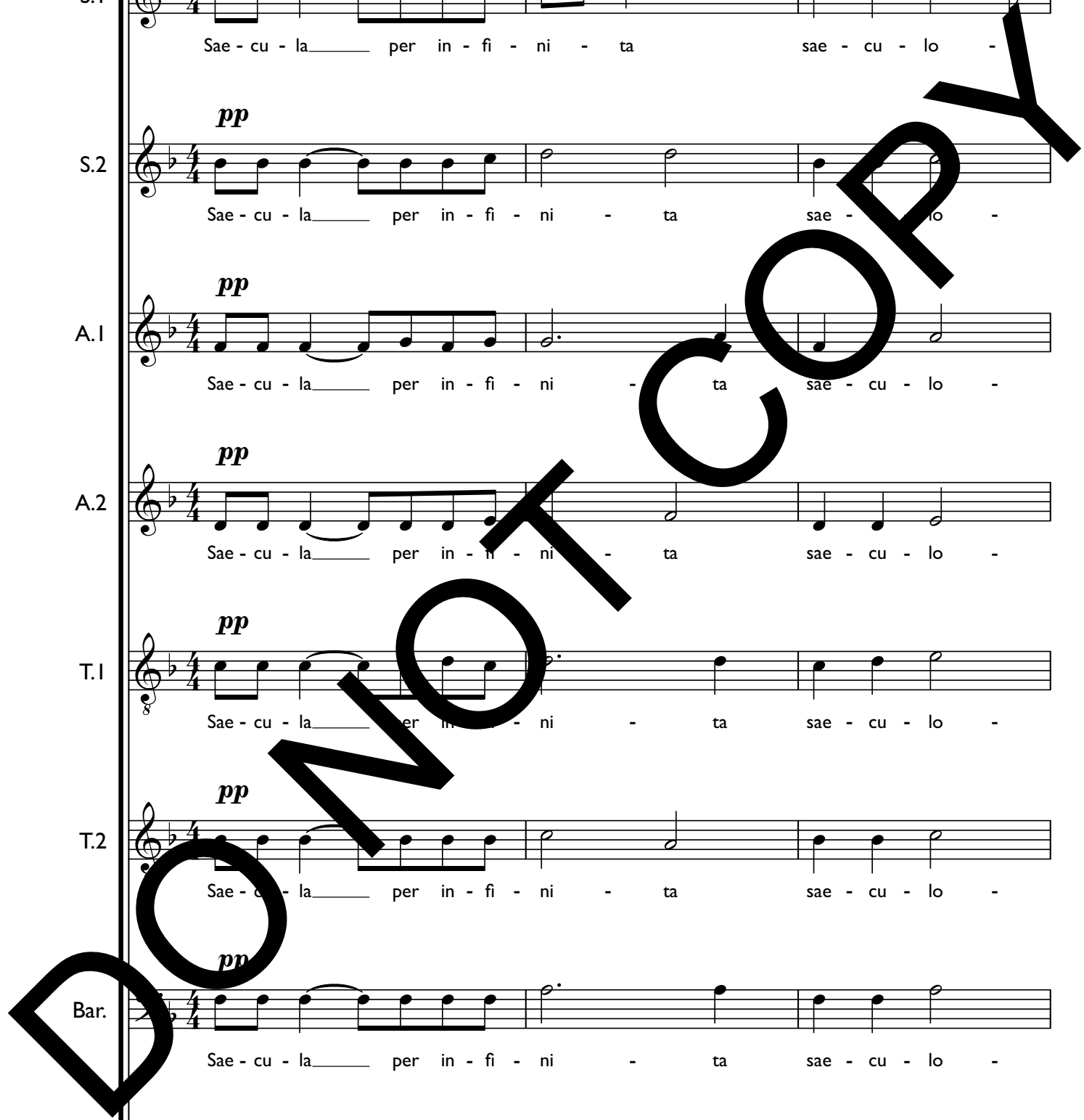
Sae - cu - la per in - fi - ni - ta sae - cu - lo -

Bar.

Sae - cu - la per in - fi - ni - ta sae - cu - lo -

B.

Sae - cu - la per in - fi - ni - ta sae - cu - lo -



53

S.1

rum. A - - - - - men.

S.2

rum. A - - - - - m

A.1

rum. A - - - - - men.

A.2

rum. A - - - - - men.

T.1

rum. - - - - - men.

T.2

rum. A - - - - - men.

Bar.

rum. A - - - - - men.

B.

rum. A - - - - - men.

